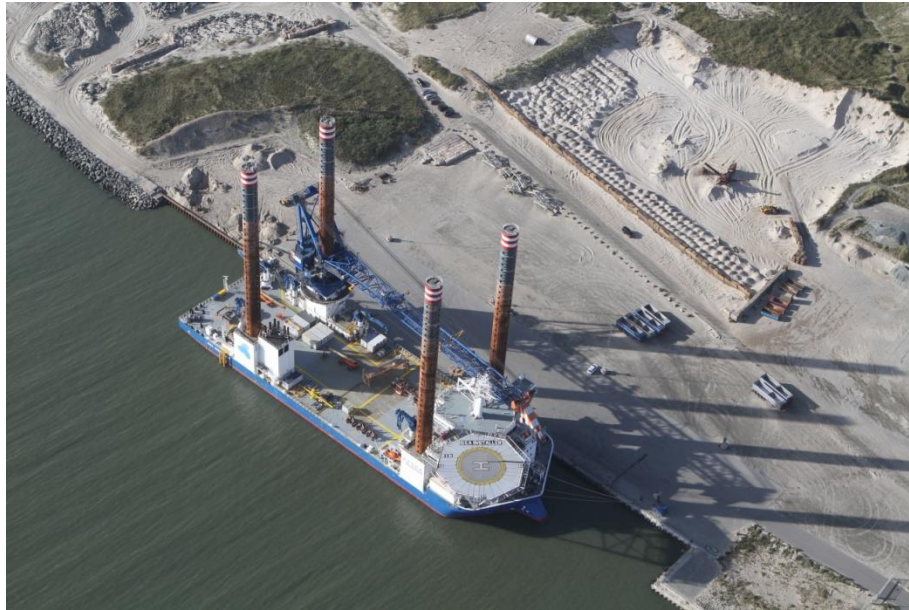


# Port of Hvide Sande

## Fact sheet - Vesthavnen

ISPS: UN Locator: DKHVS – 0002 - 56° 00' 06'' N, 008° 07' 05'' E

Address: Fabriksvej 34, DK-6960 Hvide Sande



### Quay:

Quay number 110 - 111

Quay length 210 meters

Depth 7 meters.

Turning basin, diameter 150 meters.

### Quay area:

ISPS area 20,000 m<sup>2</sup>

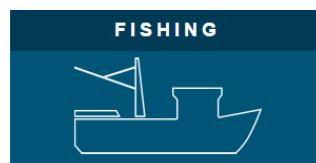
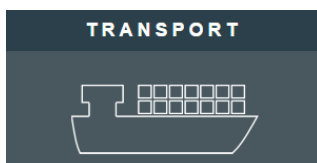
Paved area 170 x 35 meters, 5,950 m<sup>2</sup>.

### Carrying capacity:

Paved area west 60 meters 10 t/m<sup>2</sup>

Paved area east 90 meters 5 t/m<sup>2</sup>

Unpaved areas 18 t/m<sup>2</sup>



*Single point load paved area:*

Paved area west 60 meters 80 t/m<sup>2</sup>

Paved area east 90 meters 47 t/m<sup>2</sup>

Unpaved areas 50 t/m<sup>2</sup>

LED work lighting 3500 k

The area is fenced, with access control and CCTV.

**Quay details and restrictions**

**Berth**

Max LOA	140 meters, special craft, contact Port control
Max beam	50 meters, special craft, contact Port control
Max recommended draft	5.5 meters, special craft, contact Port control
Air draft restrictions	No restriction
Quay height above DVR90	2.75 meters
Fenders	Rubber fenders along quay
Bollards	8 pcs. á 50 t, distance between bollards 23.5 meters
Gangway	Ships must use own gangways
Jack Up	Possible, contact Port administration for information about seabed, geotechnical conditions and footprints.

**Service**

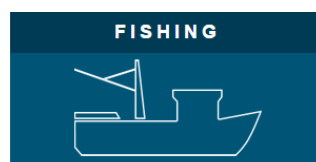
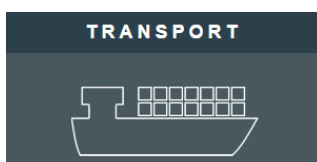
Fresh water	Standard connection
Electricity shore supply	2 towers á: 2 x 64 A standard connection
WIFI	Free WIFI

**Navigation**

Arrival / Departure restrictions	Contact Port control 1 hour before arrival, and 15 minutes before departure.
Tidal range	-0.6 to + 0.6 meter under normal conditions.

**Other**

Lowering lifeboats drills / work	Allowed, please notify Port control before commencing
Hot work	Allowed
Painting	Allowed
Distance to city center	1 km.





**Service:**

One contact to all service in Hvide Sande: Phone: +45 20 20 79 77 / email: [info@hssg.dk](mailto:info@hssg.dk)  
Hvide Sande Service Group is a group formed by the Port of Hvide Sande and 34 companies all placed in the area near the City of Hvide Sande. Hvide Sande Service Group offers solutions to all needs ships and customers on the pier may have. We can assist with everything from lunch boxes to ship furniture, and our members provide quality work in accordance with HSSG's values: good service, flexibility and fair pricing.

**TRANSPORT**



**OFFSHORE**



**FISHING**

